



Wear-Resistant Ceramic
Liner Plate & Pipe

JIANGXI SANXIN NEW MATERIALS CO.,LTD

Tel: 0086 19979978577 (WhatsApp)

Email: sales@beadszirconia.com

Website: <https://www.beadszirconia.com>

Address: Anyuan Industrial Park, Pingxiang City,
Jiangxi Province, China





Company Introduction

Jiangxi Sanxin New Materials Co., Ltd. was founded in 2008 and is a high-tech enterprise with a combination of research, trade, and technology, under joint Chinese-American investment. Over the years, we have focused on research and production in the field of ceramic materials, committed to providing customers with high-quality, high-performance products, and solutions.

Our main products include grinding ceramics, ceramic bearings, structural ceramics, ceramic blasting materials, ceramic wear parts, ceramic lining plates, and more. These products find wide applications in various industries such as powder grinding, surface treatment, petrochemicals, water treatment, refractories, electronics, military, thermal power, steel, metallurgy, machinery, coal, mining, chemicals, cement, and port terminals, among others. We maintain strict product quality control, employing advanced production equipment and a rigorous quality management system to ensure that every batch of products meets our customers' requirements.

We uphold the principle of "Quality First, Customer Foremost," aiming to provide customers with top-quality products and professional technical support. Our team works closely with customers, understanding their needs and offering customized solutions based on specific application scenarios. We are dedicated to becoming a trusted partner for our customers and contributing to the industry's development.

Jiangxi Sanxin New Materials Co., Ltd. looks forward to collaborating with you and creating a bright future together!



Various Material Performance Metrics

1. Ceramic Materials

Materials	Name	Density g/cm ³	Rockwell Hardness HRA	Vickers Hardness Hv10	Bend Strength Mpa	Compressive Strength Mpa	Wear Volume cm ³	Fracture Toughness KIC (Mpa.m ^{1/2})	Application
SX-AO90	Regular Alumina Ceramic	≥3.5	≥83	≥800	250	800	≤0.06	≥3.2	Pneumatic conveying for powder
SX-AO92	Microcrystalline Alumina Ceramic	≥3.7	≥85	≥1100	300	1200	≤0.03	≥3.2	Pneumatic conveying for powder
SX-AO95E	High-Purity Low-Sodium Alumina Ceramic	≥3.75	≥85	≥1100	300	1250	≤0.03	≥3.4	Pneumatic conveying for highly abrasive powder
SX-AO95	Fine White Alumina Ceramic	≥3.8	≥85	≥1200	320	1300	≤0.03	≥3.5	Pneumatic conveying for highly abrasive powder
SX-AO95R	Fine Red Alumina Ceramic	≥3.8	≥85	≥1000	300	1500	≤0.03	≥4.0	Pneumatic conveying for highly abrasive powder
SX-AH99	Super Wear-Resistant Alumina Ceramic	≥3.9	≥90	≥1500	350	1500	≤0.02	≥4.0	Conveying equipment for large granular
SX-ZA40	Toughened Alumina Ceramic	≥4.15	≥90	≥1400	450	2500	≤0.01	≥5.5	Conveying equipment for high-impact, large granular
SX-AZ52	Reinforced Zirconia Ceramic	≥5.4	≥88	≥1200	800	3000	≤0.008	≥7.0	Conveying equipment for impact & abrasive large granular
SX-YZ60	Zirconia Ceramic	≥6.0	≥88	≥1200	800	3000	≤0.008	≥7.5	Conveying equipment for high impact & abrasive large granular



2. Adhesive Materials

Item	Appearance	Acid-Alkali Resistance (pH)	Temperature Resistance (°C)	350°C High-Temperature Shear Strength (Metal-Ceramic)
Low-Temperature Adhesive (SX-W150)	White	3~12	≤150	≥15 MPa
High-Temperature Adhesive (SX-W350)	Red	3~12	≤350	≥2.5 MPa
Stud Welding Type (SX-W500)	Red	3~12	≤500	≥2.5 MPa
Stud Welding Type (SX-W750)	Red	3~12	≤750	≥2.5 MPa

3. Rubber Material

Property	Tensile Strength	Elongation at Break	Shore Hardness	Permanent Set
Requirement (Min)	≥15 MPa	≥300%	55~65 HA	≤24%

Wear-Resistant Ceramic Liner Model

1. 3-in-1 Liner Plate



2. 2-in-1 Ceramic-Rubber Liner Plate



3. 2-in-1 Ceramic-Steel Liner Plate

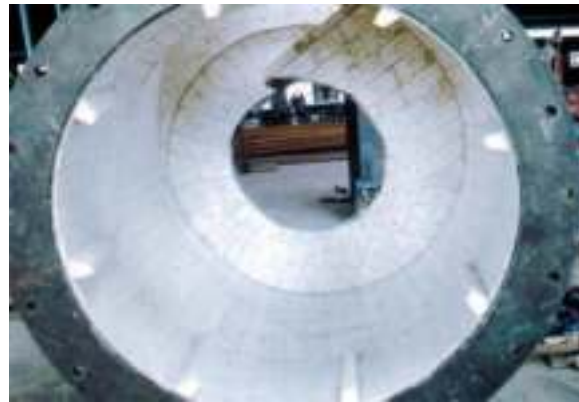


4. Stud Welding Ceramic Liner Plate





Products



Cyclone



Ceramic Lined Silo



Ceramic Lined Burner



Ceramic Lined Silo



Bucket Liner



Cyclone

Products



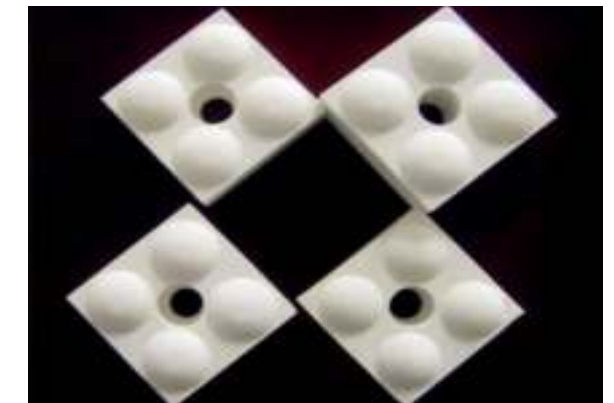
2-in-1 Rubber Ceramic Lining Plate



Ceramic Coated Roller



Dovetail Groove Ceramic Lining Plate



High-Temperature Impact-Resistant Ceramic Lining Plate



3-in-1 Rubber Ceramic Lining Plate



High Abrasion-Resistant Impact-Resistant Ceramic Lining Plate



Wear-Resistant Ceramic Pipe

Types of Wear-Resistant Ceramic Pipe

Tube Name	Forming Process	Ceramic Fixing Process	Ceramic Thickness	Inner Diameter Size	Wear Resistance vs 20#	Temperature Resistance	Corrosion Resistance
Integral Ceramic Pipe	Seamless Integral Bending	Adhesive Filling	3~25 mm	10~400 mm	20 times	≤700°C	Excellent
Sulfurized Ceramic Pipe	Flexible Hose	High-Pressure Sulfurization	3~5 mm	25~600 mm	5 times	≤100°C	Very Good
Adhesive Ceramic Pipe	Seamless Integral Bending	Adhesive Bonding or Stud Welding	3~20 mm	≥90 mm	15 times	≤250°C or ≤500°C	Good

Applicable Diameter for Wear-Resistant Ceramic Pipe

ID(mm)	Ceramic Thickness(mm)	MAX Length (m)	Pressure resistance (MPa)	Temperature resistance (°C)
25	3-5mm	6	2	100
32	3-5mm	6	2	100
42	3-5mm	6	2	100
52	3-5mm	6	2	100
68	5-8mm	6	2	100
76	5-8mm	6	2	100
89	5-8mm	6	2	100
95	5-8mm	6	2	100
102	5-8mm	6	2	100
125	5-8mm	6	2	100
152	8-13mm	6	2	100
168	8-13mm	6	2	100
194	10-13mm	6	2	100
203	10-13mm	6	2	100
219	10-13mm	6	2	100

Products

1. Integral Ceramic Pipe



2. Sulfurized Ceramic Pipe





Products

3. Adhesive Ceramic Elbow



QC & Package

Lined By Hand



Finished Product



QC



Package

